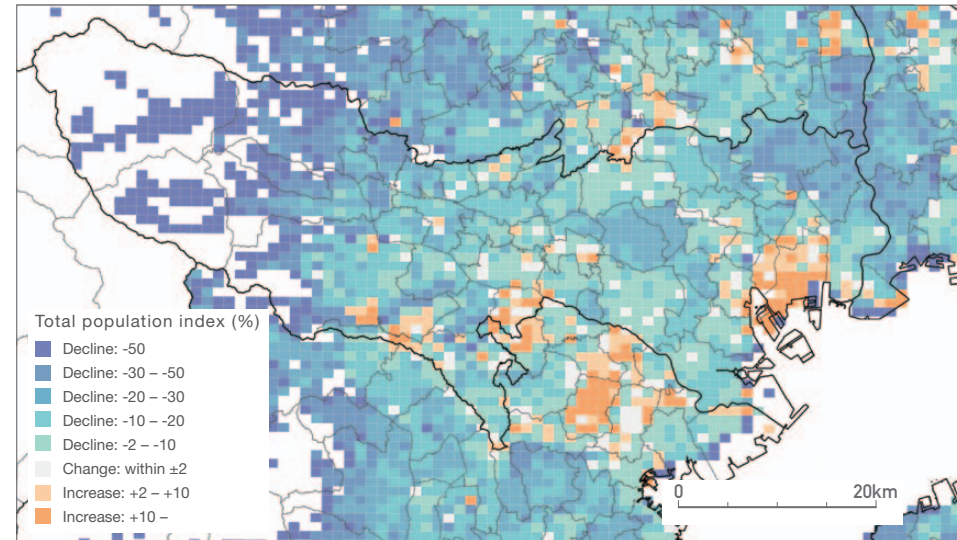


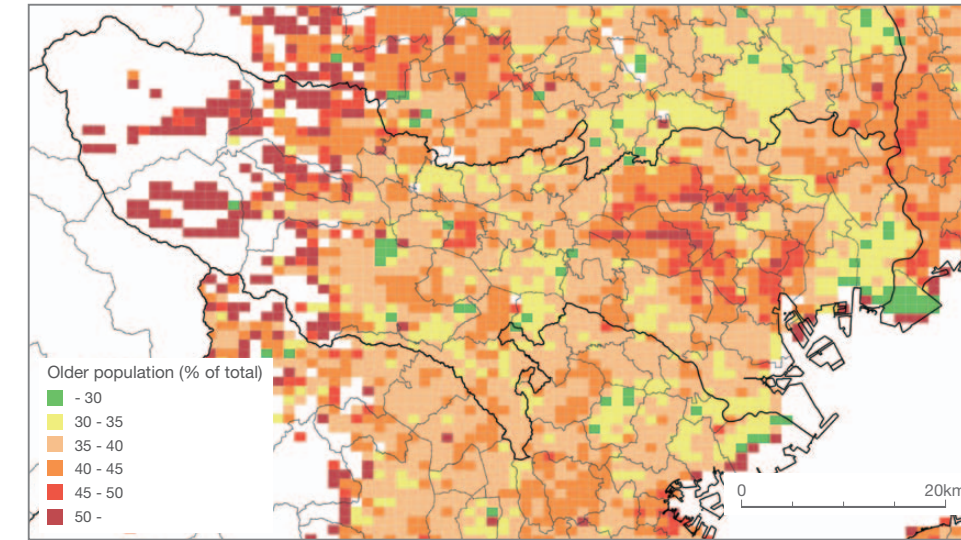
A GRAYING POPULATION

It is projected that after peaking in 2020, the population of Tokyo will decline, and the graying of society of a scale never before experienced by any city in the world will begin. This makes it essential to advance urban development to make Tokyo livable for all, from children to the elderly.

Population forecast* (Total population in 2050 indexed to 2010 levels)



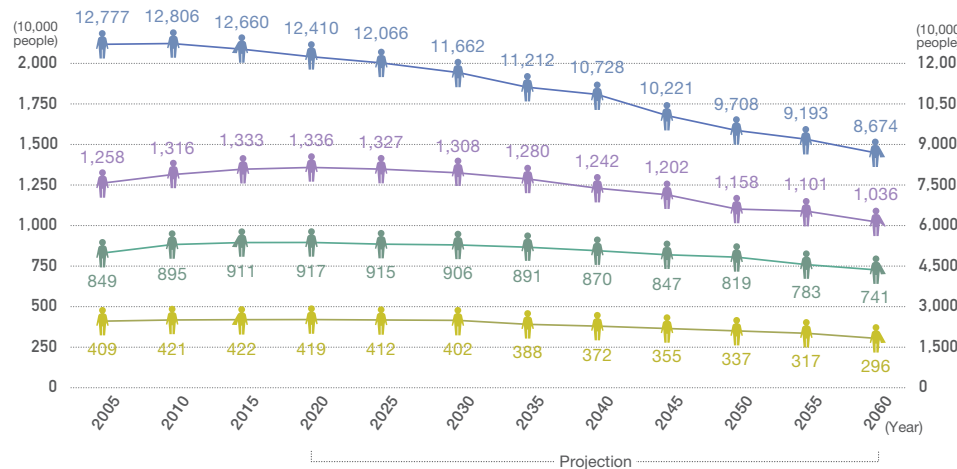
Older population (ages 65 and above) in 2050



Comprehensive regional care system to support the lives of the elderly

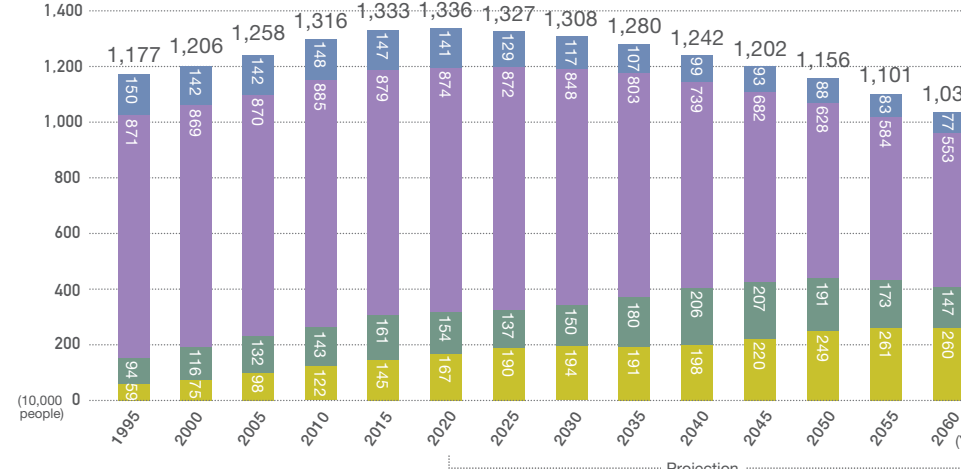


Population trends (by Tokyo Metropolis, 23 wards, Tama/islands)



Left scale... Tokyo Metropolis 23 wards Tama/islands Right scale... Japan

Population trends by age group



Young population (under 15) Working-age population (15-64) Elderly population (65-74) Elderly population (75 and older)

Source: *Prepared by the Tokyo Metropolitan Government based on National Land Numerical Information, future population estimates mesh data (FY 2014 estimates by the National Spatial Planning and Regional Policy Bureau of the Ministry of Land, Infrastructure, Transport and Tourism)

