

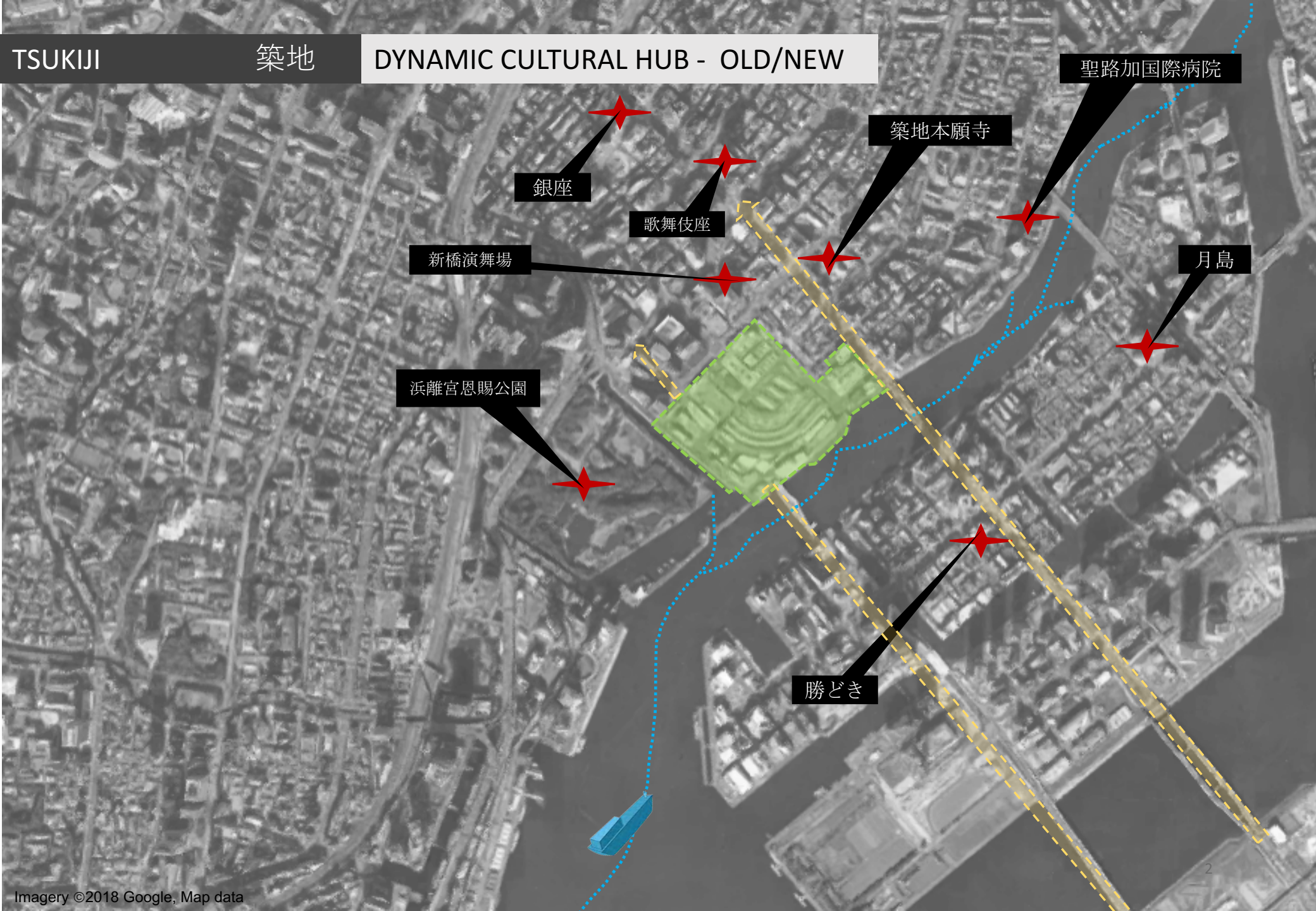
TSUKIJI

SITE DEVELOPMENT
CONCEPTUAL PROPOSAL

RICHARD COLLASSE

CHANEL
PRESIDENT AND REPRESENTATIVE DIRECTOR

29TH MARCH 2018



銀座

歌舞伎座

新橋演舞場

築地本願寺

聖路加国際病院

月島

浜離宮恩賜公園

勝どき



[PUBLIC SPACE/SERVICES]
PARK /COMMERCE/CULTURE

[PRIVATE]
HOUSING

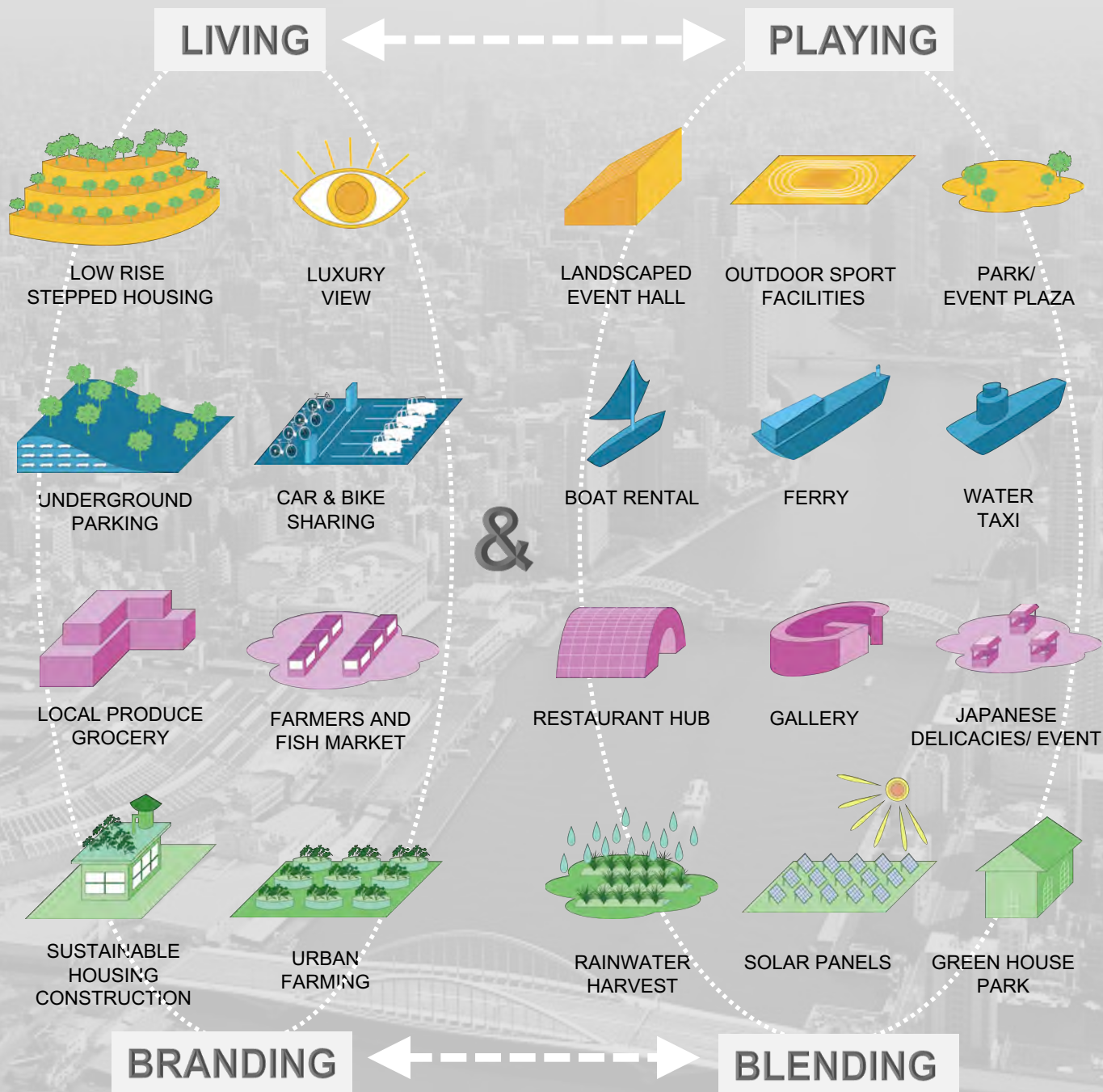
[PUBLIC /SERVICES]
WATERWAY

COMMUNITY
(LOCAL + VISITING)

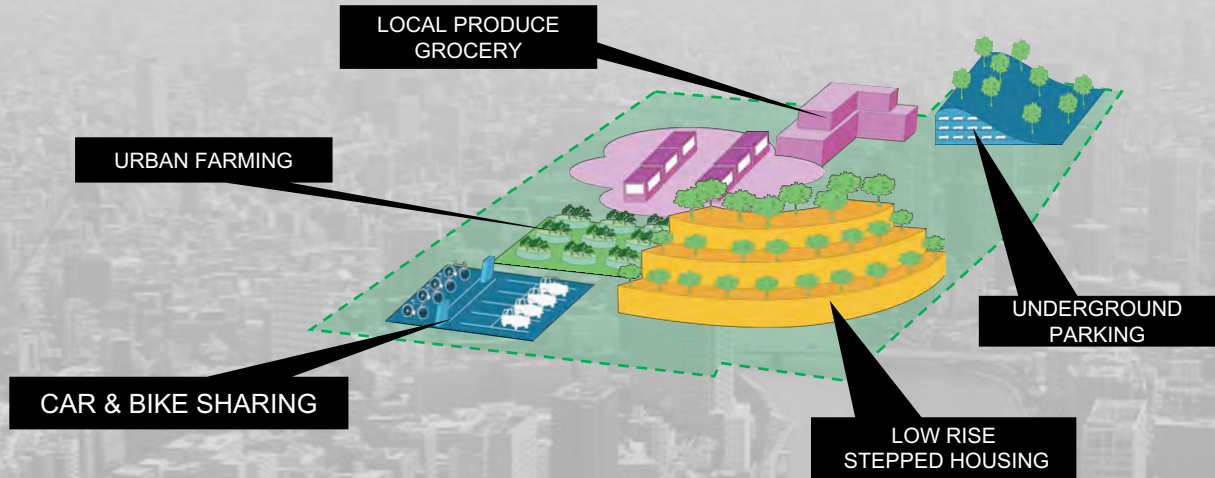
TRANSPORTATION
(DYNAMIC HUB)

LOCAL COMMERCE
(FOOD CULTURE / FISH)

GREEN / ECO
(SUSTAINABILITY)



LIVING 住む



PLAYING 遊ぶ

LIVING 住む
+
PLAYING 遊ぶ

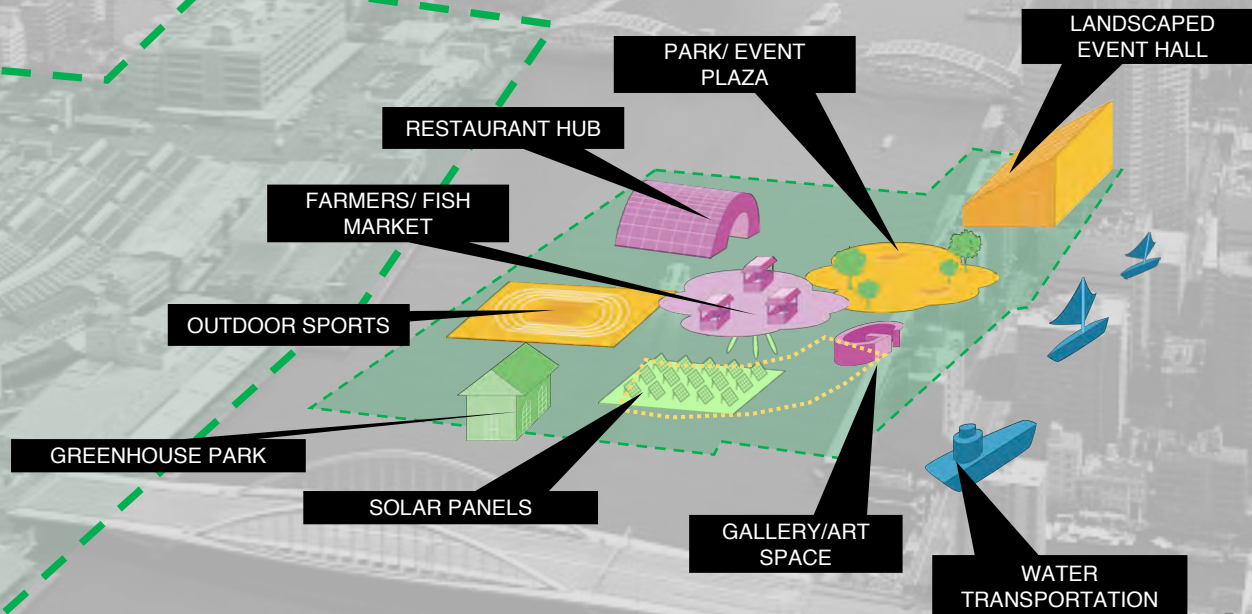




IMAGE: Collage. Arrangement of 4 images:

1_ © PEDRO, Marta;

2_ © ODA new York, in <https://www.designboom.com/architecture/oda-new-york-bayshore-proposal-lakeshore-toronto-03-17-2016/>

3_ © EDP Foundation The New MAAT Museum in <https://arcspace.com/feature/maat-museum/>

4_ © K.HOKUSAI, Sunset over Ryogoku Bridge, *Thirty six views of Mount Fuji* in, <https://ukiyo-e.org/image/met/DP141016>